

Management Planning

Fiordland Conservancy

A management plan is under development to reduce the impacts of bear-viewing and other activities on bears and their habitat. This brochure provides interim guidelines for visitors.

Láiq (Mussel Inlet) Special Management Area

Láiq is an especially significant system for bears and other wildlife. This area provides some of the most valuable habitat for bears and wildlife on the Central Coast.

Maintaining ecologically sustainable, safe, and culturally sensitive tourism opportunities is an important management objective for these areas. The potential exists to negatively impact bears and wildlife if they are continually displaced from highly productive areas. As such there are guidelines for appropriate behaviour when in this area to help ensure the integrity of these significant places are preserved in their natural state for future generations.



Contact Information

BC Parks and the Kitsoo/Xai'xais are dedicated to the protection of natural environments for the inspiration, use, and enjoyment of all visitors. Together, they are working hard to preserve this unique wilderness.

With your help, this amazing wilderness will remain for future generations to enjoy.



Kitsoo/Xai'xais Nation

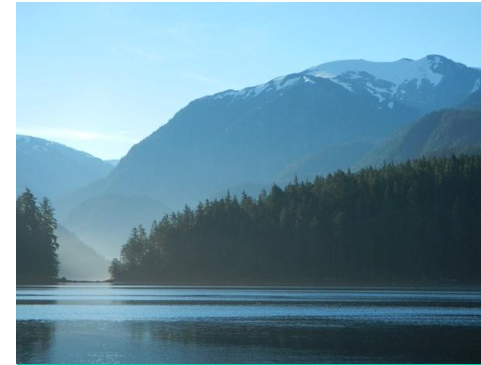
Resource Stewardship Director
(250) 839-1096

BC Parks

Area Supervisor
(250) 982-2701



BC Parks



WELCOME



Fiordland Conservancy



BC Parks



Protected Area Information and
Bear Viewing Guidelines

Fiordland Conservancy

At 84, 417 hectares, the Fiordland Conservancy is one of the finest examples of glacially gouged fiords on the British Columbia coast. It encompasses Kynoch Inlet and Láiq (Mussel Inlet), their estuaries, and surrounding mountain coast.

Here you will find spectacular sheer granite cliffs rising more than 1000 metres from sea to sky. You will enjoy views of the soaring peaks of the Coast Mountains, dense coastal forests, imposing waterfalls and lush river estuaries.



This Protected Area is located in the territory of the Kitsoo/Xai'xais and is collaboratively managed under an agreement between the Kitsoo/Xai'xais and the Province of BC.

While visiting, please respect the land, water and culture of this area.

Bear Viewing Guidelines



- Stay at least 30M (100ft) away from bears at all times.
- Approach and depart at slow boat speeds (less than 5km/ 3 knots).
- Maximum two vessels viewing any single bear or group of bears at any time. Vessels must stay together.
- Limit viewing time to 20 minutes.
- No pursuit viewing of bears.
- Be sensitive to bear reactions. If a bear acts nervous (yawning, staring, moves towards cover) you may be displacing it. Move back. If a bear shows aggressive behavior (ears back, jaw popping, growling, stomping feet), depart the area.
- Never use flash photography with animals.
- Backcountry areas are not suitable for pets due to potential problems with bears.
- Bear spray is required by at least one person who is trained in its use.

Láiq Special Management Area

Special Regulations

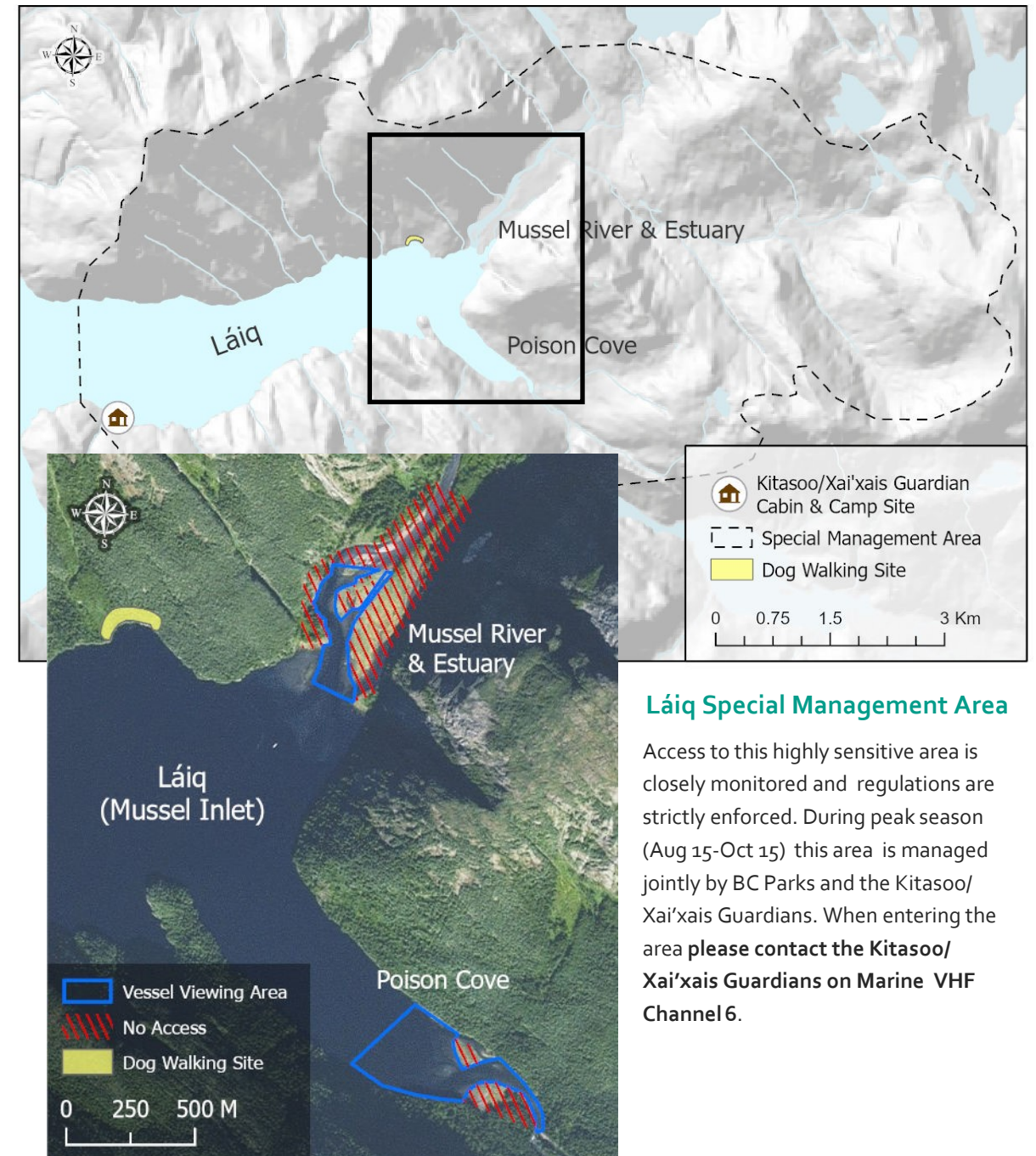
May 1 - August 14: See guidelines below

August 15-October 15: **Wildlife viewing only with a permitted guide**

October 16-April 30: **Area closed to all wildlife viewing**

- Public bear viewing is water-based only.
- Jet boats are not permitted.
- Use of drones is not permitted.
- Maximum group size of 16 people total.
- Firearms are not permitted below 1000ft.
- No pets are permitted in viewing areas, see the designated dog walking area (on leash).
- Camping is only permitted at the designated camp site.
- Please do not take food onto land.
- No smoking or fires.
- Leave no trace. Do not leave anything behind, including compostable food, human waste and toilet paper.
- Please do not take anything with you, such as flowers, wood, shells and cultural artifacts.

Láiq (Mussel Inlet) Special Management Area



Láiq Special Management Area

Access to this highly sensitive area is closely monitored and regulations are strictly enforced. During peak season (Aug 15-Oct 15) this area is managed jointly by BC Parks and the Kitasoo/Xai'xais Guardians. When entering the area **please contact the Kitasoo/Xai'xais Guardians on Marine VHF Channel 6.**